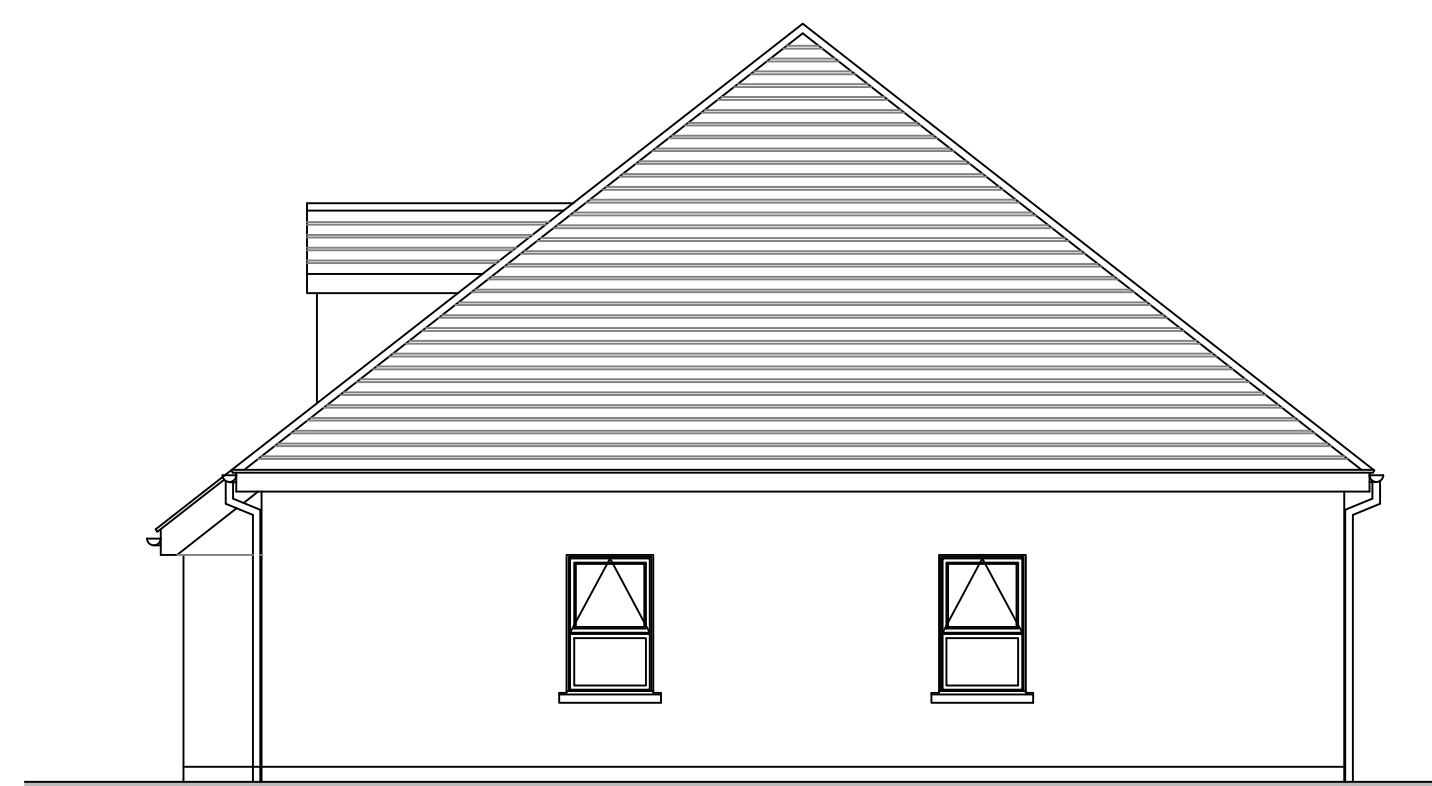
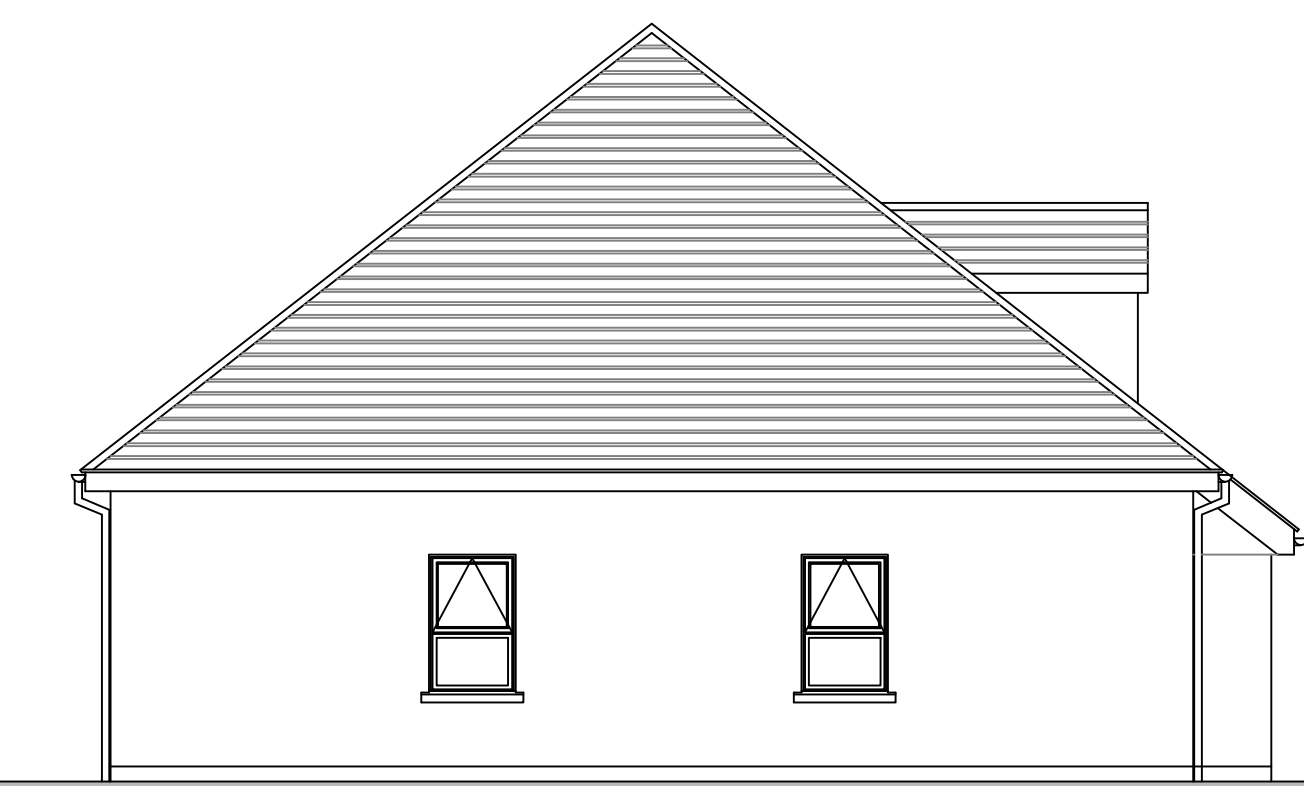


01 Proposed Floor Plans scale: 1:50



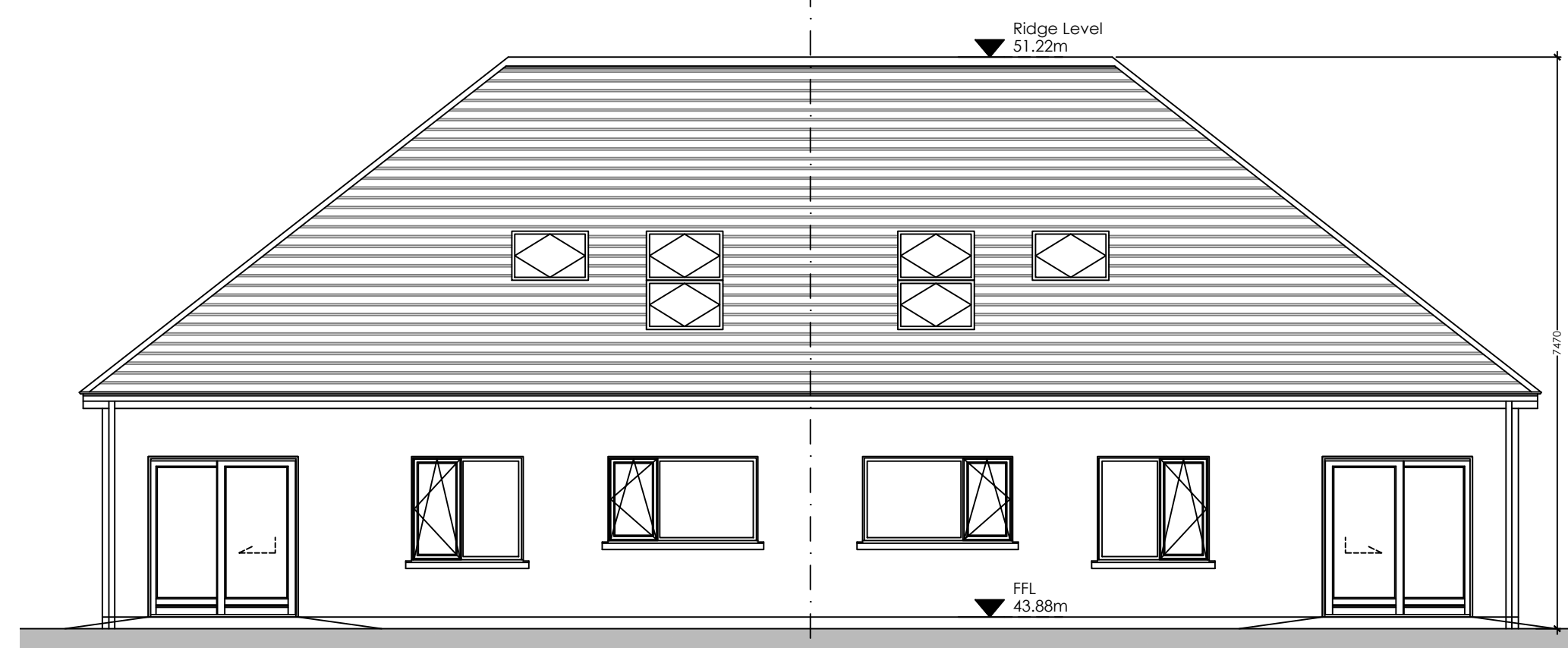
02 Proposed Elevations scale: 1:75

SPACE PROVISION CALCULATION: (East Unit)
Dwelling Type: 4 Bed / 7 Person / Two Storey

	Target:	Proposed:
Gross Floor Area:	110 sqm	129.1 sqm
Minimum Main Living Room:	15 sqm	-
Aggregate Living Area:	40 sqm	40.40 sqm
Aggregate Bedroom Area:	43 sqm	47.05 sqm
Storage:	6 sqm	7.92 sqm

Space provision calculations based on "Quality Housing for Sustainable Communities" and comply with the following:

- Area of single bedroom minimum 7.1 sqm & 11.4 sqm for double bedroom. Area of main bedroom should be minimum 13 sqm in dwelling designed to accommodate more than 3 people
- Minimum unobstructed living room width 3.3m for 2 bedroom units & 3.8m for 3 bedroom units
- Minimum room widths for bedrooms are 2.8m for double bedrooms & 2.1m for single bedrooms



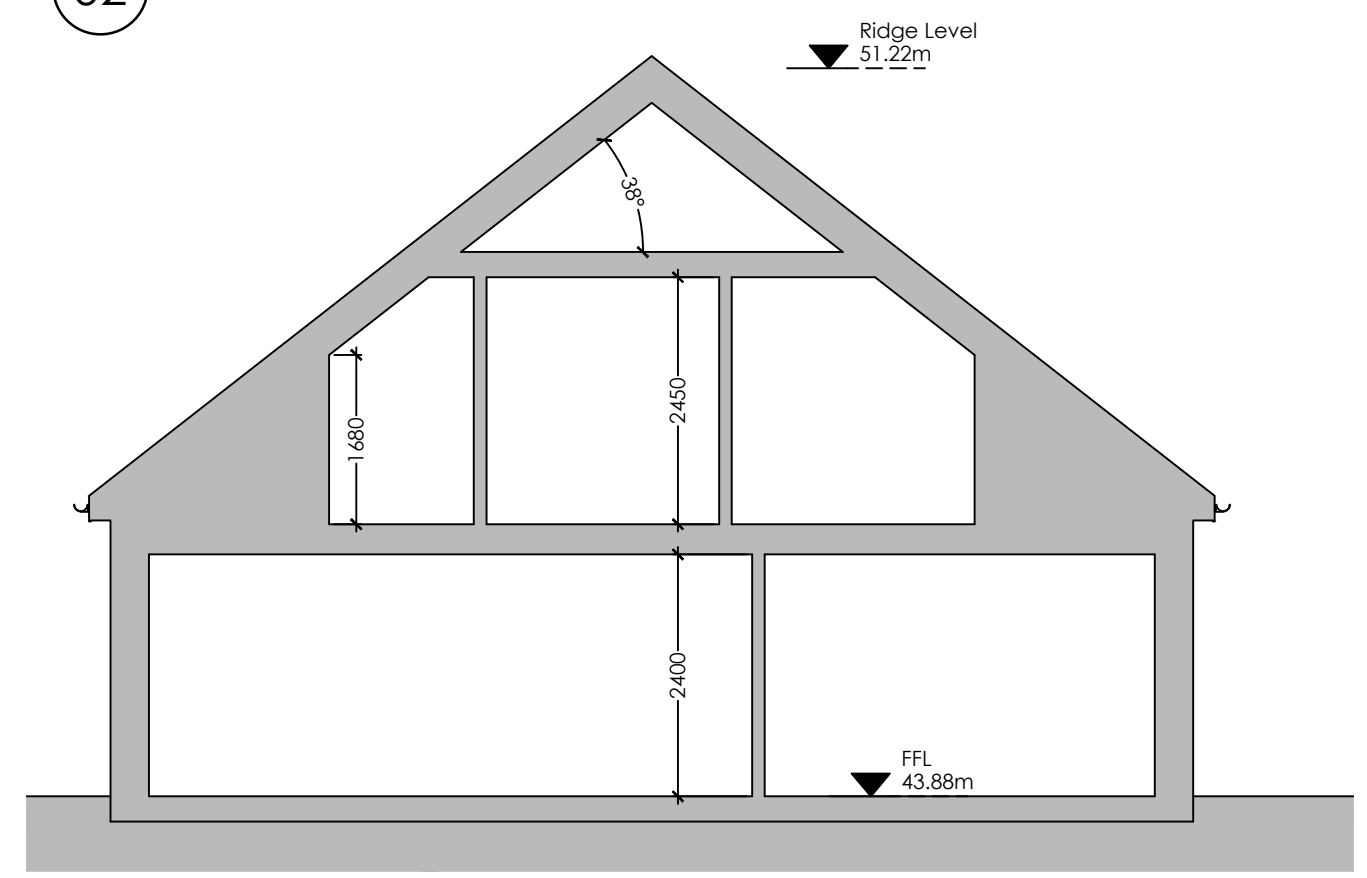
SPACE PROVISION CALCULATION: (West Unit)
Dwelling Type: 4 Bed / 7 Person / Two Storey

	Target:	Proposed:
Gross Floor Area:	110 sqm	129.1 sqm
Minimum Main Living Room:	15 sqm	-
Aggregate Living Area:	40 sqm	40.78 sqm
Aggregate Bedroom Area:	43 sqm	46.74 sqm
Storage:	6 sqm	7.82 sqm

Space provision calculations based on "Quality Housing for Sustainable Communities" and comply with the following:

- Area of single bedroom minimum 7.1 sqm & 11.4 sqm for double bedroom. Area of main bedroom should be minimum 13 sqm in dwelling designed to accommodate more than 3 people
- Minimum unobstructed living room width 3.3m for 2 bedroom units & 3.8m for 3 bedroom units
- Minimum room widths for bedrooms are 2.8m for double bedrooms & 2.1m for single bedrooms

02 Proposed Elevations scale: 1:75



03 Section scale: 1:75

PLANNING PART 8



	Proposed Dwellings at Knockroe, Delgany, Co. Wicklow CLIENT NAME: Wicklow County Council DRAWING NUMBER: 2021-044-001-PL101	Issued for Planning SCALE: As noted @ A1 DATE: January 2022 DRAWING NUMBER: Knockroe - TCCE 2021-044-001-PL101
	<small>Do not scale from this Drawing • Use figured dimensions in all cases • All dimensions to be confirmed on site • This Drawing is copyright Thomas Campbell Consulting Engineers Ltd • Tel: 094-9003995 / 086-0476845 • Email: tcampbell@tagroup.ie</small>	